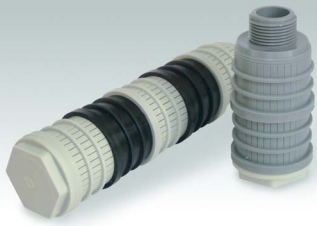
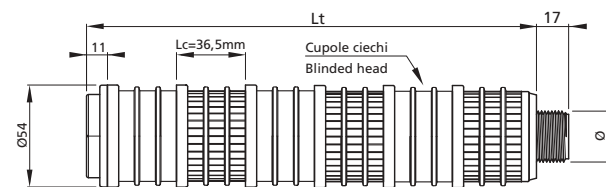
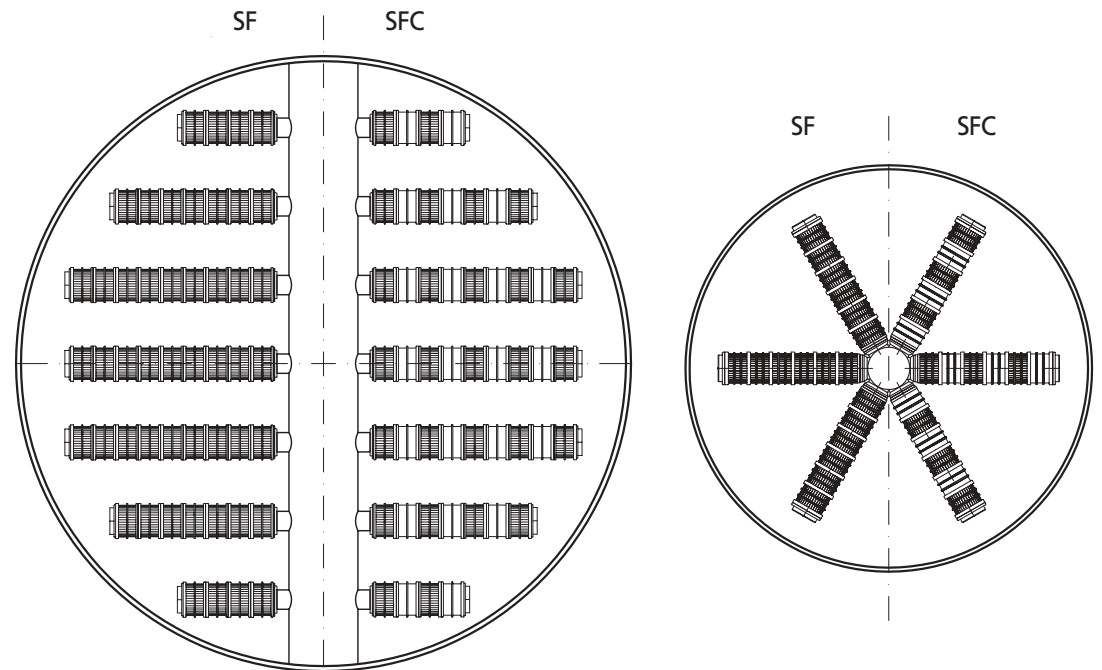
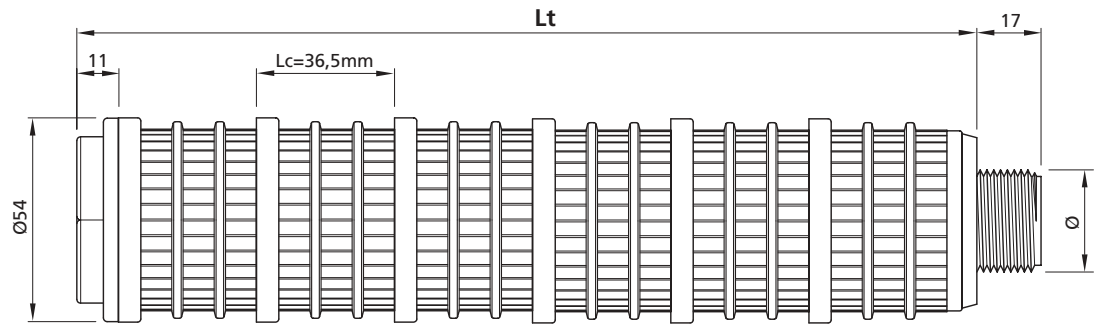


# SF - SFC

## BRACCIO FILTRANTE FILTERING ARM



- Per sistemi di distribuzione con collettori CS o tubi con attacchi commerciali
- Versione SFC per migliorare la distribuzione sulla lunghezza del braccio
- For distribution/drain system with CS hubs or pipe with BSP fittings
- SFC version to improve the distribution on arm length



SFC Versione con inserimento di cupole cieche  
SFC Version - with blinded heads insertion

Tipo Type	Fessure Slot width mm	Ø filetto Ø thread	Lt Lunghezza totale Total length
SF/SFC	0.25	3/4" G	91 mm (2cupole/head) 128 (3c/h), 164, 201, 237, 274, 310, 347 383, 420, 456, 493, 529, 566, 602, 639, 675, 712, 748, 785, 821 + 36.5 (Lc), + 36.5 (Lc) ...
	0.5	M30x2	

Materiale/Material:	Polipropilene - Polypropylene
Su richiesta/on request:	PVDF

